

**RENOVATION**

FEATURING OUTDOOR LIVING

Volume 24, No 11

**\$9.95**

Includes GST

[Trendsideas.com](http://Trendsideas.com)

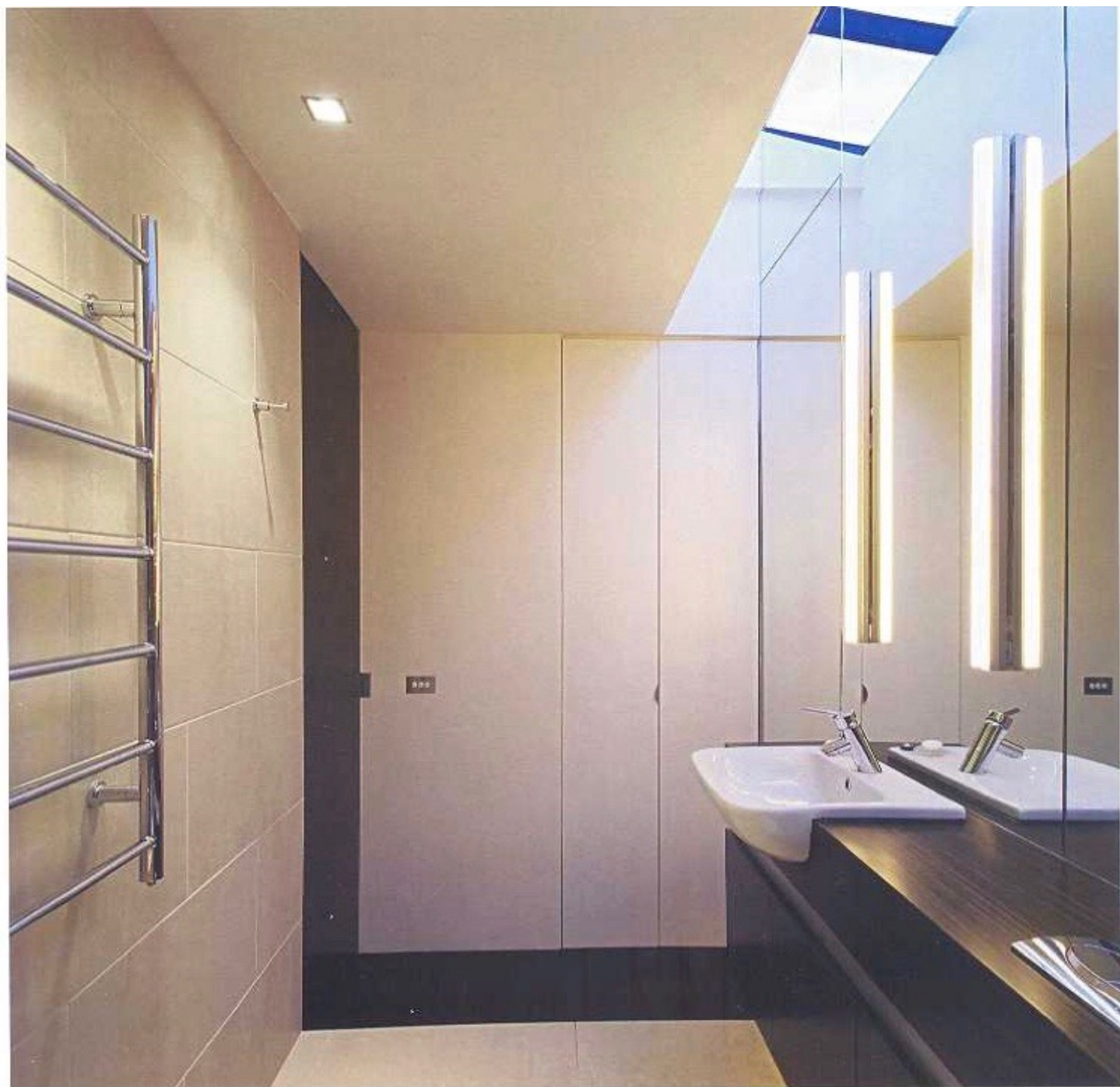
# TRENDS



ISBN 1-86752-404-7

02

9 781869 524043



# Maximised opportunities

Large mirrors, a skylight, a limited palette and concealed fittings give this compact bathroom the impression of spaciousness



**Designer:** Matt Gibson  
(Collingwood, Vic)

**Builder:**

Sherbrook Constructions

**Vanity:** New Age Veneers

**Bath, basin, shower fittings,  
toilet and taps:** Reace

**Shower enclosure:**

Sherbrook Constructions

**Flooring:** Tasmanian Oak, with  
Black Japan stain

**Wallcovering:** Painted plaster

**Wall and floor tiles:**

Nacional Tiles

**Lighting:** Corporate Culture

**Blinds:** Designer Blinds

**Story by Mary Webb**

**Photography by John**

**Wheatley, Urban Angles**

**Altering the layout of a house, even slightly,** may well have a huge impact on its flow, function and convenience.

The bathroom in this home was a dingy space at the back of the house, restricting access between the living areas and garden. To improve the bathroom and maximise the small site, designer Matt Gibson moved the bathroom to the centre of the home and the living areas to the rear, where they now connect easily with the garden.

Because the new bathroom is an internal space, Gibson added a skylight, which runs the full length of the ceiling.

"We butted the skylight up to a floor-to-ceiling mirror covering one wall of the bathroom. This effectively doubles the size of the skylight and allows even more light to be reflected into the bathroom," he says.

Because space is tight, the shower is mounted over the bath, and plumbing for the toilet is concealed by the vanity. This creates a less cluttered look and provides additional bench space.

The owners also wanted to have the laundry in the bathroom, so a tub, washer/dryer and vertical storage for mops and brooms are concealed behind doors that are fitted flush with the wall.

**Facing page:** This compact bathroom was moved from the rear of the house. A skylight reflected in a mirror creates an illusion of space.

**Above left:** In the bathroom are the laundry, a vanity, toilet, shower and bath. The simple palette of materials includes limestone tiles and a black-stained vanity. A brushed aluminium shadow line conceals finger pulls.